

Finding Math

Use household items to build a shelter for your favorite toy! Practice problem-solving skills while you plan and build. Then, use shapes to draw your finished design!

MATERIALS

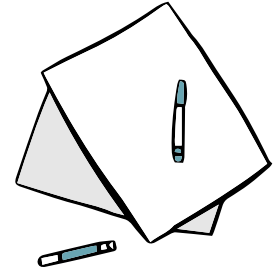
- Your favorite toy
- Building materials, like cardboard, paper tubes, blocks, pillows, and blankets!
- Accessories to decorate your shelter, like artwork or a comfy spot to sit.

1



Choose Your Toy

Before you start building, choose your toy! Choosing your toy will help you make important decisions about your shelter. Is your toy small? Medium? Large? What kind of building materials will you need to make a shelter large enough for your toy?



2

Make a Building Plan

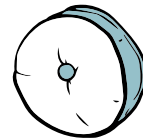
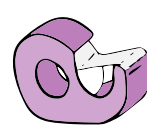
Now that you've chosen your toy, make a building plan! What kind of shelter do you think your favorite toy would like to live in? How many stories will it have?

How will you decorate? Do your building materials allow you to add decorations with glue or tape, or will you use other items, like pillows, blankets, and other toys?

3

Build Your Shelter

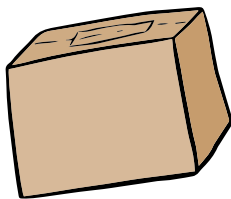
It's time to build! Think about your building plan. What is the first step? Have you gathered your materials? Will your building have a foundation, or will you start on the walls? As you build, you may have to adjust your plan. You could have new ideas to incorporate!



4

Finishing Touches

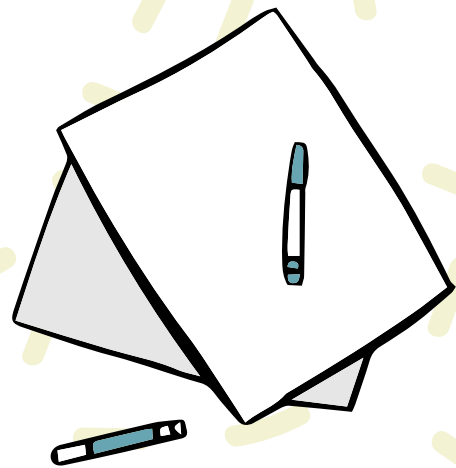
You've finished your shelter! Now it's time to decorate. Imagine what your toy might enjoy in the shelter. A bed? Some artwork? A telescope? A snack? Will your decorations fit inside? When your finished draw your final creation!



Raise the Roof!

Finding Math

Use this page to make a building plan for your shelter. How much space will you need for your construction? What materials will you need to gather? What steps will you take?



Raise the Roof!

Finding Math

Use this page to draw your final creation! What shapes do you see?

